

Dave Holloway



Vase
Maple Burl

First Place - Best in Show

I feel very fortunate in being able to sustain a living from both wood turning and playing music. A harmony exists between the two that makes life more enjoyable. Though economic success is still elusive, riches in life style are abundant.

Also Exhibited

Vertibowl - Maple Burl

Bookmatched Vases - Walnut, Spalted Alder, Ash, Black Anigré

Gordon Galenza



Men's Jewel Chest

Lacewood, Ebony, Leather

Honourable Mention

A simple yet interesting design that is highlighted by inlaid ebony and gentle curves.

Gordon is a self-taught designer/craftsman.

Also Exhibited

"I See Red" Cabinet - Curly Maple **Second Place - Best in Show**

John Lavoie



Bombé Chest

Birdseye Maple, Ebony,
Maple, Leather

Third Place - Best in Show

This chest is my interpretation of the classic bombe form. Much pleasure is gained by running one's hands over the sensuous curves of this piece.

I produced this shape by using a series of techniques, including bandsawing, laminating and hot pipe bending.

Fred Coates



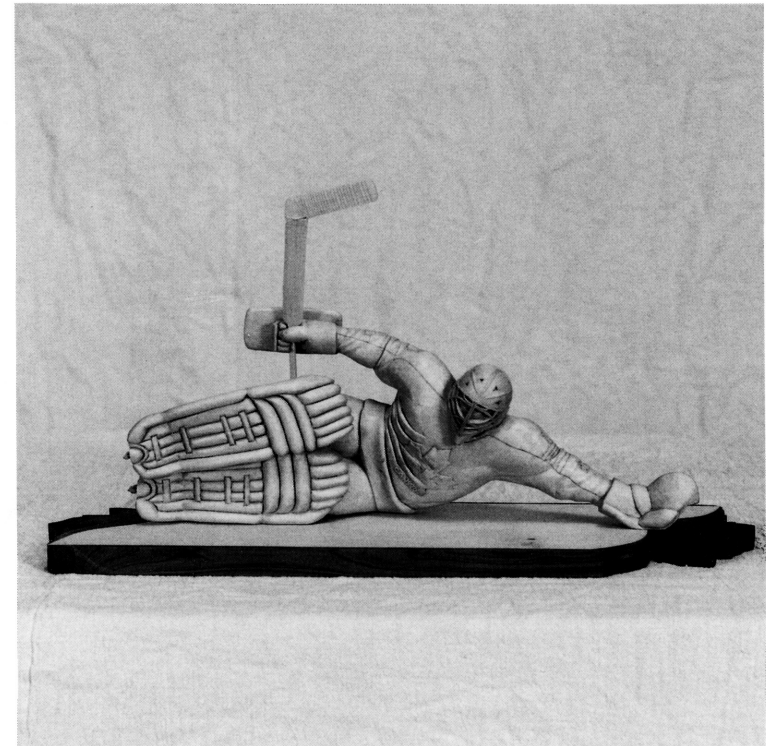
Trastero

Poplar, Hand Pulled
Glass Cane, Pencils

Glass Cane by Bhava Cool

This style of long-leg cabinet was developed by a bleary-eyed Spanish colonial who was sick to death of the mice blasting their mambo music while they devoured enormous quantities of rice and beans. "If they would only play in time", she said, "but they never did learn". And so, with a nod toward tradition, this interpretation of a trastero stands high off the ground with the dance floor safe from bad mambo music.

Brian E. Harroun



Goalie # 1

Pine, Eastern Red Cedar

Brian is a hobby woodworker from Edmonton, who started making furniture three years ago. He is a generalist and is ready to try his hand at anything.

Also Exhibited

Cobia - Pine, Eastern Red Cedar, Brazilian Walnut

Douglas A. Haslam



"Goddess" Low Table

Bubinga, Manitoba Maple, Bloodwood, Purpleheart

The manipulation of a naturally formed material like wood has to be one of the most therapeutic physical processes I have ever taken part in. It never ceases to amaze me how the planing of a board by hand can heal and renew me when I'm battered and down.

Bayot Heer



Coffee Table

Beech Maple

Bayot is a furniture maker/designer who is currently working as a goldsmith. His exposure to delicate shapes in jewels is reflected in this piece.

Gerald W. Johnston



"Leisure Visions" Kaleidoscope

Cocobolo, Maple, Wenge, Ziricote

Gerald is largely self taught. He has attended various woodturning workshops, including the National Woodturning Conference '87 in Saskatoon, and is a former member of the Saskatchewan Woodworkers Guild. For the past five years, Gerald's work has appeared in the Saskatchewan Dimensions show.

Allan Lindoe



Ritual Bowl

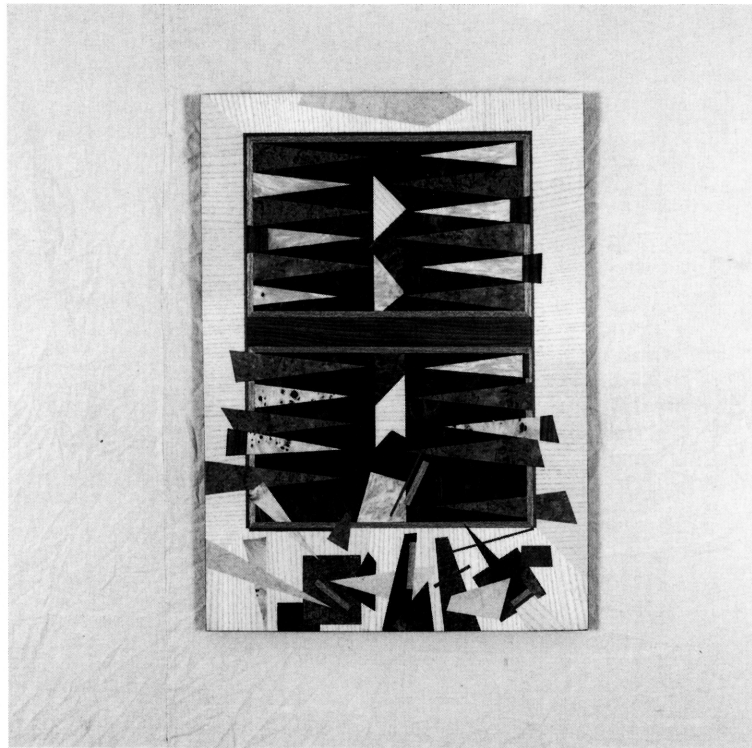
Madrone

I enjoy collecting my own wood, because this removes the constraint of form. In my work I pay close attention to form, and enjoy a good finish.

Also Exhibited

Rocky Mountain Bowl - Rocky Mountain Juniper

Robert Pinard



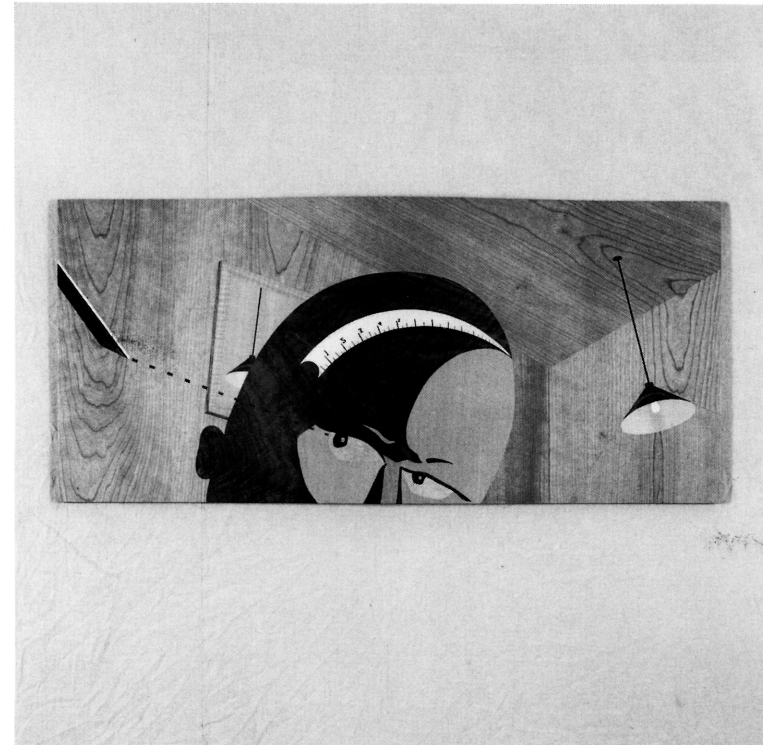
"Jeu d'Artiste" (Artistic Backgammon)

Marquetry

La marqueterie: c'est la magie du bois. Patience, minutie, dextérité et amour du métier sont les propres du marqueteur. Mes jeux-d'artiste respectent le design du jeu. Ils sont fonctionnels, esthétiques, durables; et, je tiens à ce qu'il en soit ainsi.

Marquetry is the magic of wood. Patience, precision, dexterity and the love of the craft are the attributes of the marquetry artist. My artistic board games respect the design of the game; they are functional, esthetic and durable, as I meant them to be.

Ralph Reichenbach



"Reflection/Reality"

Marquetry

This piece symbolizes the way we as individuals and a society see an absolute. Our interpretation of a given truth is all too often backwards. We no longer know what is reality and what is a distorted reflection.

Herm Stolte



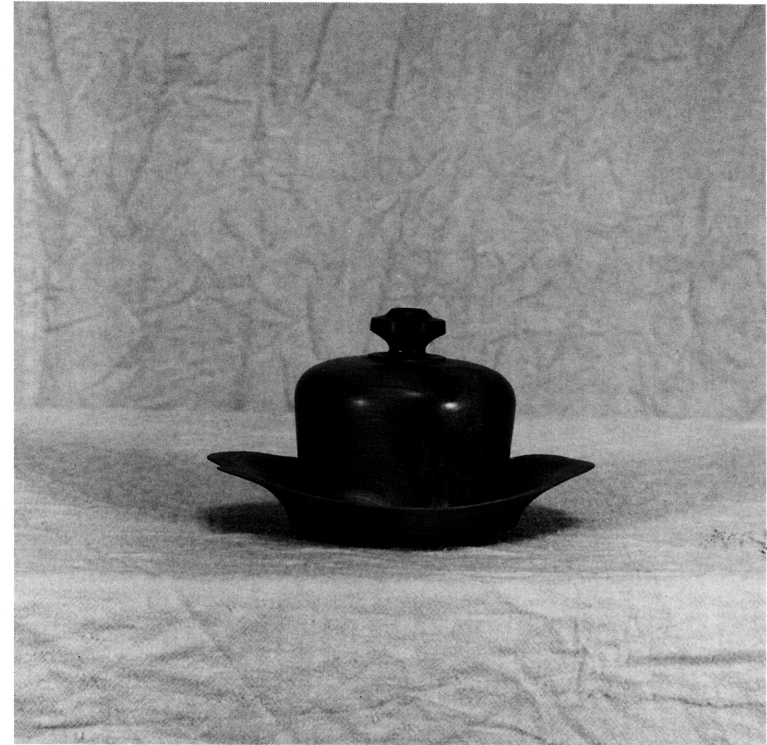
Coffee Table

Quilted Cherry

This rare board of quilted cherry, found among the common, was a gift from the Maker. To be able to craft it into a useful table is a greater gift — also from Him.

Herm does fine woodwork and turning under the name 'Herm's Turn', as well as teaching Industrial Arts on a part time basis at Calgary Christian School.

Frank Tettemer



Lidded Butter Dish

Wild Black Cherry

Woodturning can be one of the favourite sculptural expressions of a woodworker.

Artistic thought and a steady hand unite to create delicate yet functional contours.

The creative process itself, the act of *doing*, feeds and rejuvenates my soul with uplifting energy.

I enjoy the flow of ribbons of shavings, as they are parted by the delicate cutting edge of the chisel. Sometimes I'm more fascinated by the intense focus of being in the moment, while turning a bowl, than I am interested in the finished product.

Also Exhibited

Bowl - Red Maple Burl

Katherine Woods



Bowl

Elm

I was raised and still live in coastal B.C. Its influence appears both in my choice of materials and in the subject matter of my carvings. My mother introduced me to carving and I cannot remember when wood carving was not a part of my life. I have been carving professionally since 1978 and began woodturning in 1983. The faster, more spontaneous nature of wood turning was a welcome contrast to the more intense process of carving.

Also Exhibited

Box - Mountain Ash

Bark Ridge Bowl - Flowering Plum