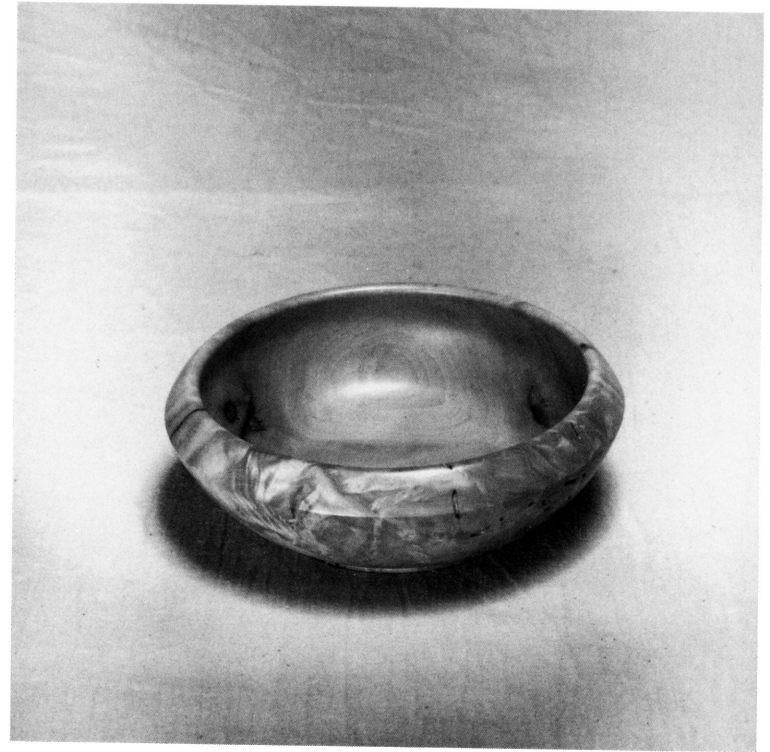


Harold Biswanger



Fruit Bowl

Wormy Black Poplar

All woods used are from both native and ornamental trees grown in Alberta.

Harold is a farmer as well as a woodworker.

Fred Coates



Low Table

Cherry, Hand Pulled Glass, Buffalo Rawhide, Bamboo Skewers

Two elephants who managed their dream and ran away to the circus.
A lifetime of professional carpentry, timber work and fine woodworking.

Maurice de St. Jorre



Shell Motif Jewellery Chest

Walnut, Wenge, Ultrasuede Lining

In the design and construction of jewellery boxes I try to match the beauty of the jewels that will be stored in them.

Maurice is a mining engineer who has been learning woodworking the hard way for the past 15 years.

Keith Drysdale



Coffee Table

Cherry

The simplicity and functionality of Shaker furniture has always intrigued me. I attempt to bring some of that into my own designs.

Keith is a hobby woodworker for the last eight years and is still learning.

Gordon Galenza



Jewel Chest on Stand*

Bloodwood, Ebony, Pau Amarello

*2nd Choice

Designed to simulate a gold strongbox on a stand, this jewel chest fulfills it's functional and aesthetic purpose.

Gordon is a self-taught designer/craftsman.

Tom Gorman



Game Table

Black Walnut, African Mahogany, Black Anigre, Lacewood, Figured Ash

The strive for perfection is a long, hard road but the rewards are great.

Tom is an Irish cabinetmaker who emigrated to Canada thirteen years ago.

Doug Haslam



Rafflesia Domesticus Lamp

Western Maple, Mahogany, Bubinga

3-Point Landing Bowl

Bubinga, Pacific Yew

The world seems a strange place in these times of mass construction/production/destruction and I often wonder whether the creation of one of a kind hand crafted objects is part of the solution to the madness or simply a response. Is it enough to strive to produce meaningful, aesthetically pleasing pieces with the hope that the end user will benefit from it and perhaps spread the word?

Doug is a designer/craftsman scratching out a living doing work that he believes in.

Bayot Heer



Hope Chest*

Dyed Maple and Ash, Silver

*Honorable Mention

Bayot is a furniture maker/designer currently training as a goldsmith in Calgary.

David Holloway



Little Village

Honduras Mahogany, Maple Burl, Black Anigre

Volcano

Maple Burl

I have a great deal of reverence for the integrity of the wood that I use; to extend its ability to bring pleasure well beyond the life of the tree and to interpret and bring to life the art hidden within each piece.

David is a full time turner who derives both pleasure and income from his work.

Gerald Johnston



Puttin' On The Ritz

Cane Stand - Wenge, Holly, Silky Maple; Canes - Various Woods

Snooker Anyone?*

Case - Lacewood, Walnut, Maple,
Pool Cue - Maple, Cocobolo, Holly, Gaboon Ebony, Bone

*3rd Choice

Gerald is largely self-taught. He has attended various woodturning workshops including the National Woodturning Conference '87 in Saskatoon and is a former member of the Saskatchewan Woodworkers Guild. For the past four years Gerald's work has appeared in the Saskatchewan Dimensions show.

John Kopala



Hall Table

Pau Amarello, Powder Coated Aluminum

As one moves around this neo-modern work there is a dramatic change in the apparent mass of the legs from top to bottom. Rails provide an uninterrupted transition from horizontal to vertical. In sharp contrast to the geometry of the vivid, natural yellow wood structure, hoops and a softly belled top of silver vein lend lyrical elements to the composition.

John is a technical advisor in the Faculty of Environmental design workshop at the University of Calgary.

Tom McKenzie



"Score"*

Maple, Reed, Aluminum, Leather, Stainless Steel

*Honorable Mention

When designing furniture I look for a simple theme that is narrative and playful. Exploration of material while minding the craft gives the piece life.

Tom is a Furniture designer/maker from Vernon B.C.

John Morel



Clock*

Eight day English Regulator
Movement made by Trevor Beatson, Goncalo Alves

*Honorable Mention

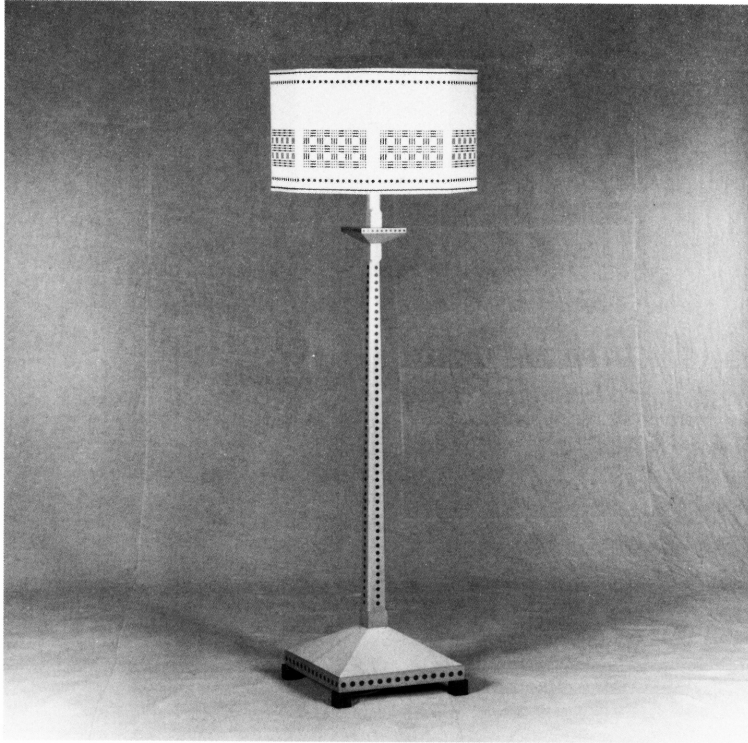
Butterfly Box

Honduras Rosewood with Abalone and Mother-of-Pearl Inlay

Good woodwork should complement or bring harmony to its function; simple to say, hard to achieve.

John operates a woodworking shop in Calgary called 'The Furniture Maker' which specializes in one of a kind pieces of furniture.

Henry Schlosser



Floor Lamp No. 4

Lemonwood, Holly, Purpleheart, Hand Stencilled Shade

Display/Storage Chest

Tulipwood, Ebony, Ivory Inlay, Leather Lining

Every Project has it's own problems and the craftsman's solution breathes a life into the work. At an exhibition one can see the life the artisan has given the creation.

Henry is a woodworker who designs and builds one of a kind pieces.

Philip R. Smith



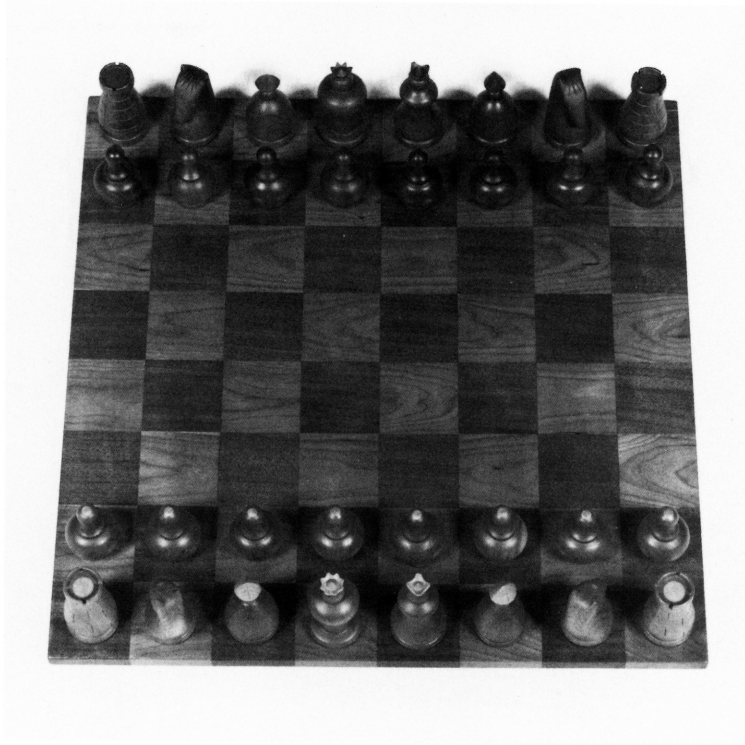
Cabinet

Red Alder, Pacific Yew

This piece was originally built for the Vancouver Island Woodworkers Guild show "Native Woods" with wood harvested from the Island.

Philip is a furniture designer/maker from Victoria, B.C.

Herm Stolte



Chess Set

Cherry, Mahogany, Birch

To be given the gift of working with wood is a great blessing; to be able to serve others with it makes it worthwhile.

Herm does fine woodworking and turning under the name 'Herm's Turn' as well as teaching Industrial Arts on a part time basis at Calgary Christian School.

Katherine Woods



Bark Edge Bowl

Maple

Turned and Carved Box

Chinese Camphorwood

Most of my work is from locally grown woods – we are lucky in Victoria in having an abundance of varieties including Walnut, Monkey Puzzle and Osage Orange. I was lucky too in inheriting a collection of exotic woods which included the rather rare Chinese Camphorwood the box is made from. The inside is left unfinished for the scent.

Katherine is a professional carver and turner from Victoria, B.C. who works in wood, soapstone and alabaster.