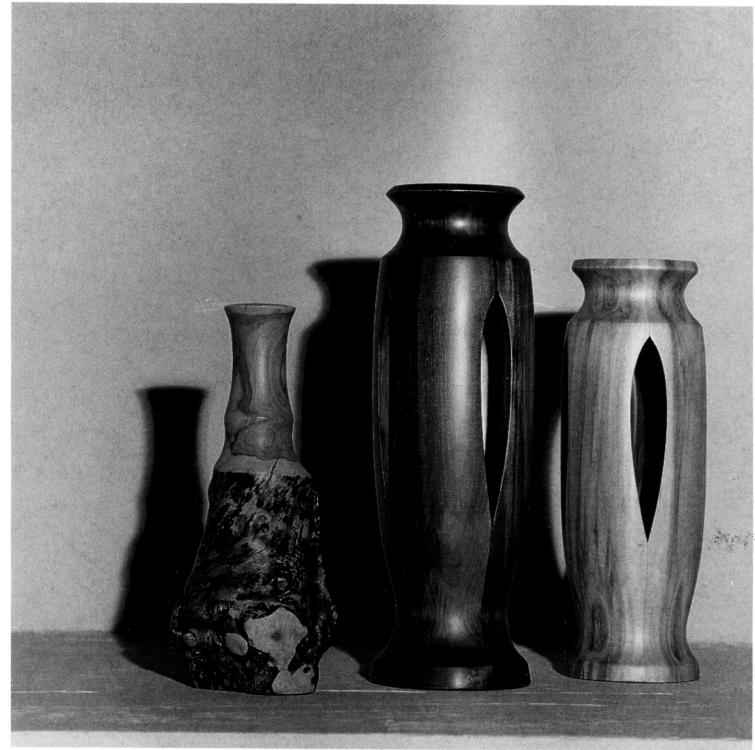


Harold Biswanger

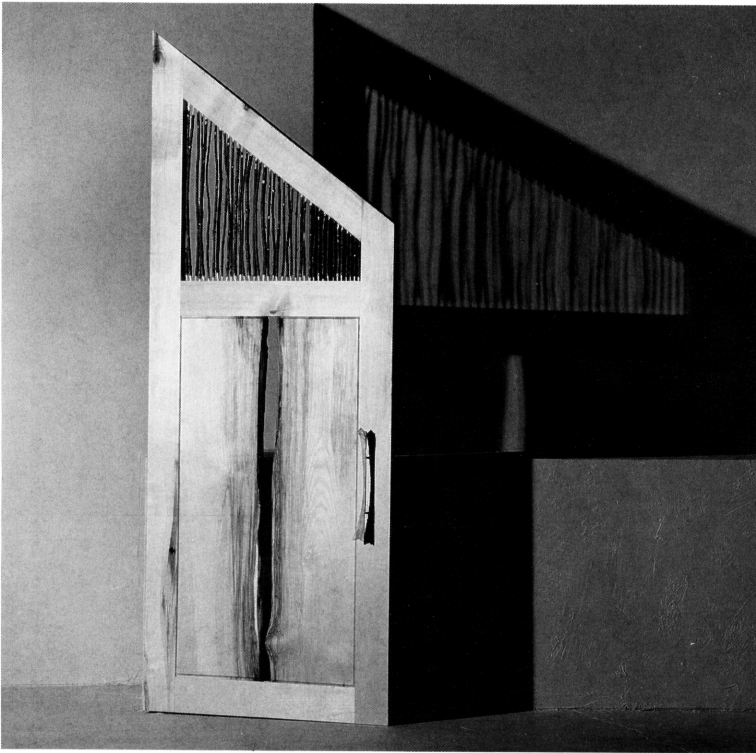


Weed Pots

Lilac Root
Maroon Dyed Poplar
Willow

I farm near Calgary and started turning wood ten years ago. I work mostly in native and locally grown ornamental woods.

Fred Coates



Secret Closet Door

Poplar, Red Willow, Buffalo Bone, Iron

I love the beauty hidden within the most common of Alberta's trees. The poplar was sawn at a Millarville sawmill; since burnt to the ground. The willow came from the river bank in front of my house; chopped from the ice in February. The handle was cut from a buffalo bone found in the grass at Morley. I have integrated these quintessential Alberta materials in a graceful fashion.

A lifetime of professional carpentry, timber work and fine woodworking.

Gordon Galenza



CD Cabinet*

Lacewood, Ebony, Anigré

*2nd Choice

Three Legged Table*

Bloodwood, Satinwood, Ebony

*Best in Show

Striving to achieve balance through functionalism and excellence in design presents an ongoing challenge with the occasional success along the way.

Gordon is a self-taught designer craftsman.

Tom Gorman



Coffee Table

Solid Walnut Base, Parquetry veneered top in Black Pear, Honduras Mahogany and Pommellie veneers.

For me the joy of doing intricate parquet designs is what counts. If the end result works, then it's a bonus.

Tom is an Irish cabinetmaker who emigrated to Canada thirteen years ago.

Crys Harse



Feeder For Small Birds

Mixed Willow

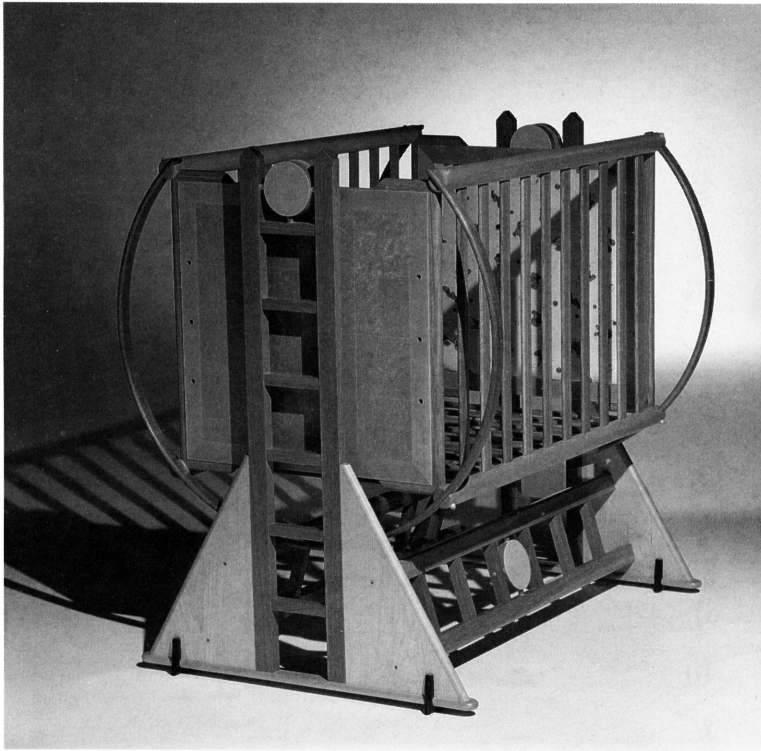
World Peace Basket

Buff and White Willow

The "The World Peace Basket" is so named because it cannot be easily carried by one person. Cooperation is required.

In addition to her own work, Crys teaches basketweaving throughout the Prairie Provinces in communities, schools and universities.

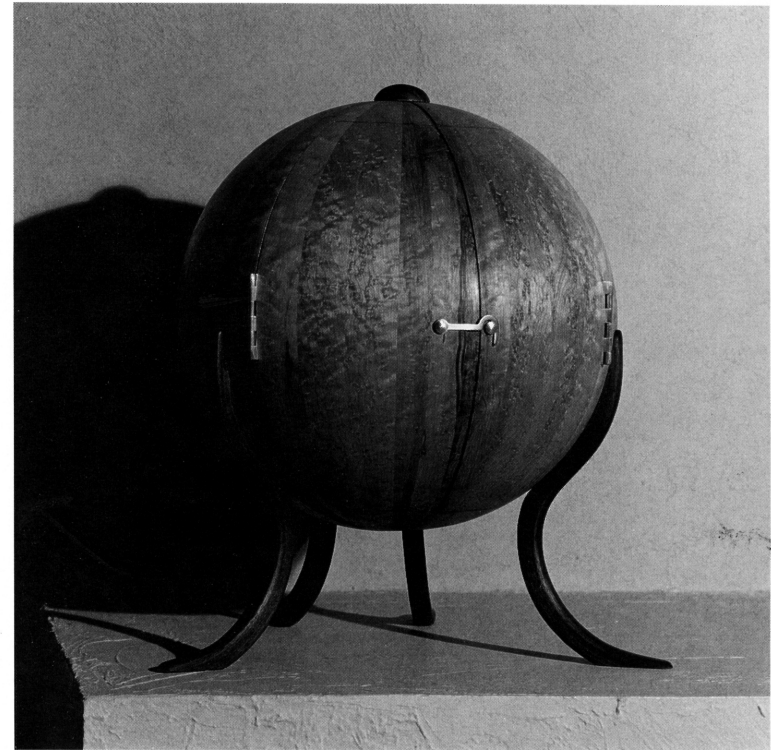
Bayot Heer



Cradle
White Oak, Maple, Ebony

Bayot was trained as a furniture maker in Switzerland; worked independently from 1982 to 1987 and is presently employed in the trade.

John Lavoie

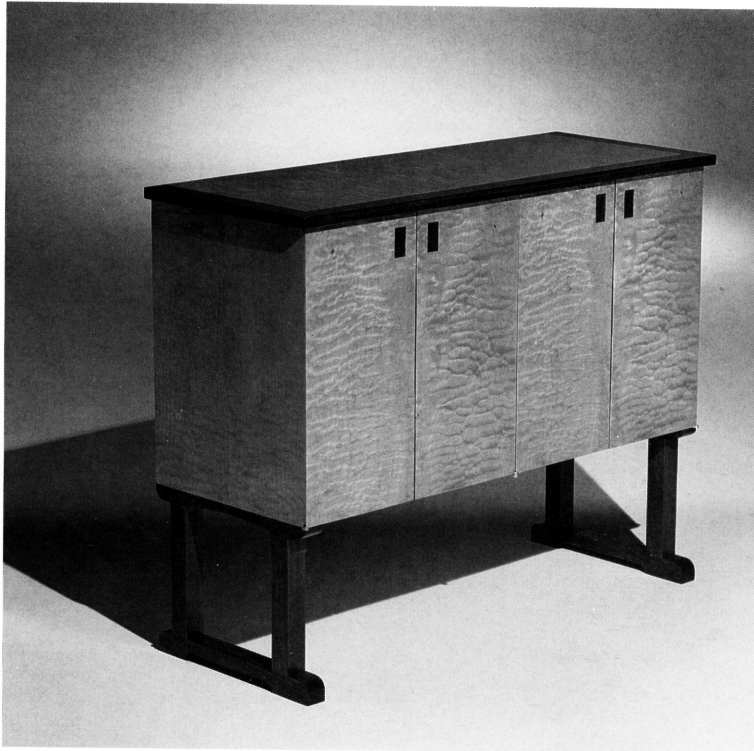


Jewel Orb
Birds-eye Maple, Walnut, Leather

In the beginning, an impossible fantasy. A very round object. I thought of how to slice and shape wood into segments to produce this shape. In the end, I think I have achieved what I was dreaming of.

John is a professional cabinet and furniture builder; also a woodworker for fun.

John Morel



Table*

Cherry, Olive Ash, Holly

*3rd Choice

Cloud Cabinet

Quilted Maple, Bloodwood, Holly

Easy Chair

Birds-eye Maple, Ebony, Holly

We are very fortunate to live in a part of this world where we can enjoy such a rich variety of furniture. It is very fulfilling to rub shoulders with fine woodworkers who are striving to do their best in this interesting subject.

John emigrated from England 26 years ago and operates a woodworking shop in Calgary called 'The Furniture Maker' which specializes in one of a kind pieces of furniture.

Mike Mulvey



Hall Table*

Black Walnut

*Honorable Mention

Lattices are very intriguing from both a visual and a structural point of view. Introducing the curves and compound angles makes this piece more challenging to build and more interesting to look at.

Mike is a full time designer/builder of custom furniture.

Henry Schlosser



Low Display Table*

Wild Crab Apple with Ebony and Ivory Inlay

*Honorable Mention

High Display Table*

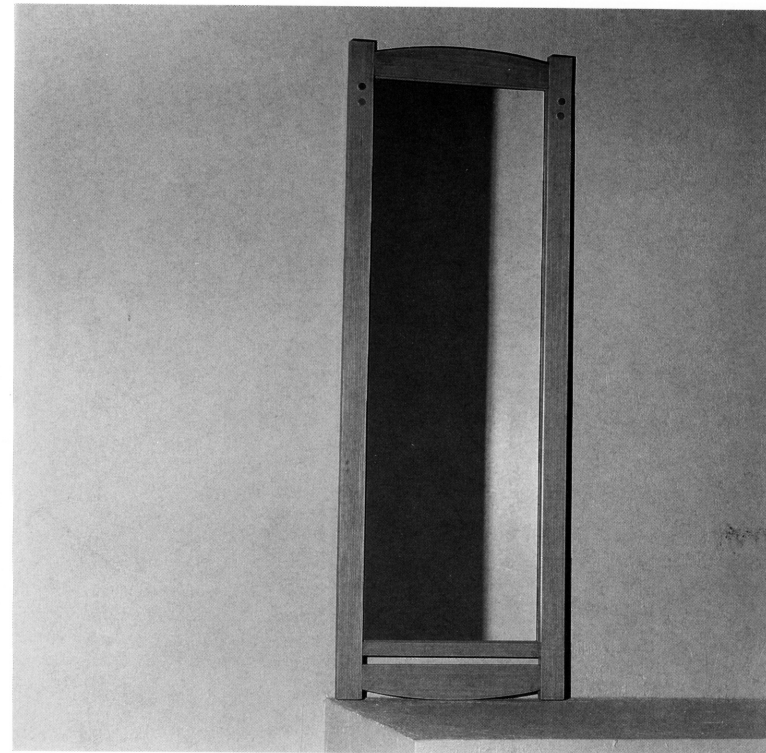
Bocote and Holly with Tagua Nut,
Ebony and Silver Inlay

*Honorable Mention

Display tables need not be dull and uninteresting. They should be just as interesting and delightful to look at as the object they are to hold.

Furniture design and building is very relaxing and refreshing for me as well as giving me a chance to express my own desires and feelings.

Lorne Simpson



Full Length Mirror

Quarter Sawn Fir

The ladies dressing mirror is to be located in a 1930's home. The design as interpreted from 'Arts and Crafts'/'Mission' movements is intended to sit comfortably in the house which is detailed in quarter sawn fir.

Lorne is an architect and amateur woodworker.

Herm Stolte

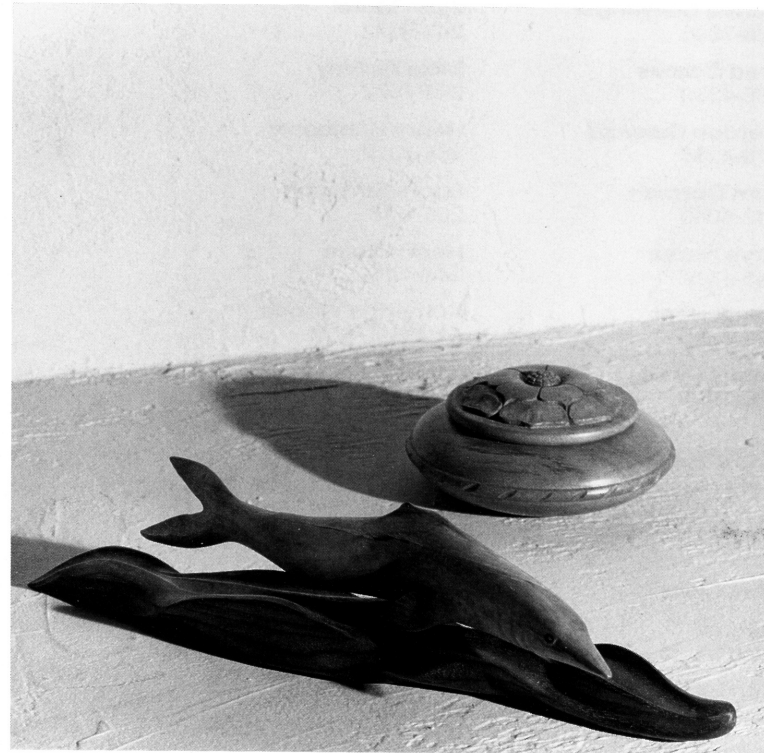


Student Desk
Cherry, Walnut, Ash

May my daughter work as hard at this desk as I did, and may her studies be based always on The Book.

Herm does fine woodwork and turning under the name 'Herm's Turn' as well as teaching Industrial Arts on a part time basis at Calgary Christian School.

Katherine Woods



Bowls
Natural Edge Elm, Elm, Natural Edge Maple

Fish Carving
Maple, Walnut

Box
Turned and carved Dogwood

Katherine is a professional carver and turner. In addition to wood, she also works soapstone and alabaster. From the newsletters, we also know she is a driving force in the Vancouver Island Woodworkers Guild.